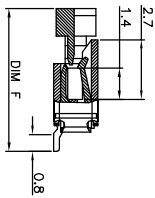
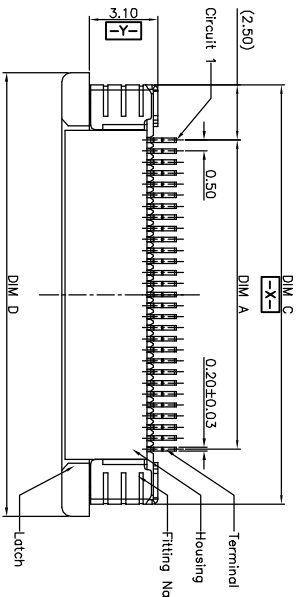


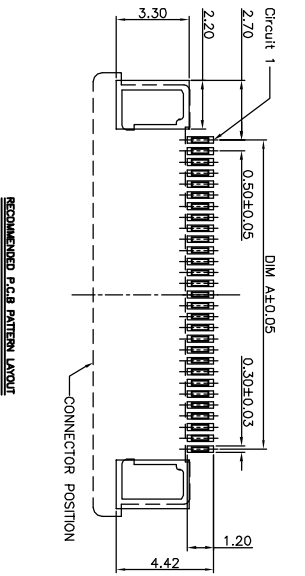
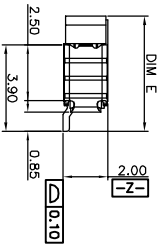
REV.	ECN NO.	LOCATIONS.	DESCRIPTION	DATE	CHANGER
A				9-9-13	

- Note:
1. Material: thermoplastic high temp. UL94V-0. Color: natural.
 - 1.2 Latch: thermoplastic high temp. UL94V-0. Color: black.
 - 1.3 Terminal: copper alloy.
 - 1.4 Fitting Nail: copper alloy.
 2. Finish:
 - 2.1 Terminal: Underplating: Au/matt Tin overall.
 - 2.2 Underplating: matt Tin overall.
 3. Product must comply with RoHS specification.

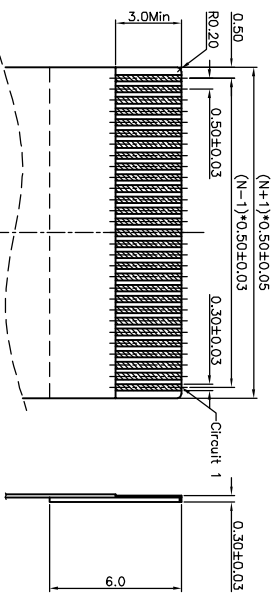
- Ordering Information
- 1-D F P A B G I R-01
 X-4-60
 FINISH PLATING
 6000-5MM
 JUPUSIDE
 90°-120U*



SECTION A-A
SCALE 1:1



RECOMMENDED PCB PATTERN LAYOUT



RECOMMENDED PITCH/TRACK DIMENSION

CIRCUIT	DIM A	DIM B	DIM C	DIM D	DIM E	DIM F
4	1.50	2.60	6.50	7.80		
3	2.00	3.30	7.60	8.90		
2	2.50	3.60	8.50	9.80		
1	3.50	4.60	9.50	10.80		
0	4.00	5.10	9.50	10.10		
10	4.50	5.60	9.50	10.60		
11	5.00	6.00	10.00	11.10		
12	5.50	6.50	10.50	11.60		
13	6.00	7.00	11.00	12.10		
14	6.50	7.60	11.50	12.60		
15	7.00	8.10	12.00	13.10		
16	7.50	8.60	12.50	13.60		
17	8.00	9.10	13.00	14.10		
18	8.50	9.60	13.50	14.60		
19	9.00	10.10	14.00	15.10		
20	9.50	10.60	14.50	15.60		
21	10.00	11.10	15.00	16.10		
22	10.50	11.60	15.50	16.60		
23	11.00	12.10	16.00	17.10		
24	11.50	12.60	16.50	17.60		
25	12.00	13.10	17.00	18.10		
26	12.50	13.60	17.50	18.60		
27	13.00	14.10	18.00	19.10		
28	13.50	14.60	18.50	19.60		
29	14.00	15.10	19.00	20.10		
30	14.50	15.60	19.50	20.60		
31	15.00	16.10	20.00	21.10		
32	15.50	16.60	20.50	21.60		
33	16.00	17.10	21.00	22.10		
34	16.50	17.60	21.50	22.60		
35	17.00	18.10	22.00	23.10		
36	17.50	18.60	22.50	23.60		
37	18.00	19.10	23.00	24.10		
38	18.50	19.60	23.50	24.60		
39	19.00	20.10	24.00	25.10		
40	19.50	20.60	24.50	25.60		
41	20.00	21.10	25.00	26.10		
42	20.50	21.60	25.50	26.60		
43	21.00	22.10	26.00	27.10		
44	21.50	22.60	26.50	27.60		
45	22.00	23.10	27.00	28.10		
46	22.50	23.60	27.50	28.60		
47	23.00	24.10	28.00	29.10		
48	23.50	24.60	28.50	29.60		
49	24.00	25.10	29.00	30.10		
50	24.50	25.60	29.50	30.60		
51	25.00	26.10	30.00	31.10		
52	25.50	26.60	30.50	31.60		
53	26.00	27.10	31.00	32.10		
54	26.50	27.60	31.50	32.60		
55	27.00	28.10	32.00	33.10		
56	27.50	28.60	32.50	33.60		
57	28.00	29.10	33.00	34.10		
58	28.50	29.60	33.50	34.60		
59	29.00	30.10	34.00	35.10		
60	29.50	30.60	34.50	35.60		

DISNT 得升電子股份有限公司
DISNT MECHANICAL ELECTRONIC CO.,LTD

DRAWN BY: 楊熊 DATE: 9-9-13
 CHECKED BY: 何智权 DATE: 9-9-13
 APPROVED BY: 陈宗渊 DATE: 9-9-13

TOLERANCE UNSPECIFIED:
 X. ±0.50
 X.X ±0.25
 X.XX ±0.15
 X.XXX ±0.05
 X.XX ±T
 XX ±T

PROJECTION:

UNIT: mm [inch] SIZE: A4

SCALE: 1:1

PART NAME: 成品規格圖
 0.5Htch H=2.0 PFC ZIP R/A Upper Type3 SMT CONN

PART NO. T-DFPYRB6TR-UJ
 MOLD NO.
 DRAW NO. T-DFPYRB6TR-UJ
 SHEET 1 OF 1